



India Meteorological Department
(Ministry of Earth Sciences)

SPECIAL MESSAGE (BOB/02/2022)

TIME OF ISSUE:1230 HOURS IST

DATED: 17.03.2022

FROM: INDIA METEOROLOGICAL DEPARTMENT (FAX NO. 24643965/24699216/24623220)

TO: CONTROL ROOM, NDM, MINISTRY OF HOME AFFAIRS (FAX.NO. 23093750)
CONTROL ROOM NDMA (FAX.NO. 26701729)
CABINET SECRETARIAT (FAX.NO.23012284, 23018638)
PS TO HON'BLE MINISTER FOR S & T AND EARTH SCIENCES (FAX NO.23316745)
SECRETARY, MOES (FAX NO. 24629777)
H.Q. (INTEGRATED DEFENCE STAFF AND CDS) (FAX NO. 23005137/23005147)
DIRECTOR GENERAL, DOORDARSHAN (23385843)
DIRECTOR GENERAL, AIR (23421105, 23421219)
PIB MOES (FAX NO. 23389042)
UNI (FAX NO. 23355841)
D.G. NATIONAL DISASTER RESPONSE FORCE (NDRF) (FAX NO. 26105912, 2436 3260)
DIRECTOR, PUNCTUALITY, INDIAN RAILWAYS (FAX NO. 23388503)
ADMINISTRATOR, ANDAMAN & NICOBAR ISLANDS (FAX NO. 03192- 232656)
CHIEF SECRETARY, TAMIL NADU (FAX NO 044-25672304)
CHIEF SECRETARY, PUDUCHERRY (FAX NO 0413-2334145)
CHIEF SECRETARY, ANDHRA PRADESH (FAX NO. 0863-2441029, 08645-246600)
CHIEF SECRETARY, ODISHA (FAX NO. 0674-2536660)
CHIEF SECRETARY, WEST BENGAL (FAX NO. 033-22144328)

Sub: Low pressure area southeast Bay of Bengal & it's likely intensification into a cyclonic storm by 21st March, 2022

The low pressure area over central parts of south Bay of Bengal moved east-northeastwards and lay centred at 0830 hours IST of today the 17th March over southeast Bay of Bengal and adjoining east Equatorial Indian Ocean.

It is likely continue to move east-northeastwards, become a well marked low pressure area and lie over southeast Bay of Bengal and adjoining south Andaman Sea by 19th March morning. Thereafter, it is likely to move nearly northwards along & off Andaman & Nicobar Islands, intensify into a depression by morning of 20th March and into a cyclonic storm on 21st March. Thereafter, It is likely to move nearly north-northeastwards and reach near Bangladesh-north Myanmar coasts around morning of 22nd March, 2022.

Warnings:

(i) Rainfall (warning graphics enclosed)

18th March: Light to moderate rainfall/thundershower at most places with **heavy to very heavy rainfall at isolated places** very likely over Nicobar Islands.

19th March: Light to moderate rainfall/thundershower at most places with **heavy to very heavy rainfall at a few places very likely over Andaman & Nicobar Islands with isolated extremely heavy rainfall likely over Nicobar Islands.**

20th March: Light to moderate rainfall/thundershower at most places with **heavy to very heavy rainfall at a few places and extremely heavy rainfall at isolated places** very likely over Andaman and Nicobar Islands.

21st March: Light to moderate rainfall/thundershower at most places with **isolated heavy rainfalls** very likely over Andaman Islands.

(ii) Wind warning

- **17th and 18th March:** Squally winds speed reaching 40-50 kmph gusting to 60 kmph are very likely to prevail over southeast Bay of Bengal and adjoining south Andaman Sea.
- **19th March:** Squally winds speed reaching 45-55 kmph gusting to 65 kmph are very likely to prevail over Andaman and Nicobar Islands, Andaman Sea and southeast Bay of Bengal.
- **20th March:** Squally winds speed reaching 55-65 kmph gusting to 75 kmph are very likely to prevail over Andaman and Nicobar Islands, Andaman Sea and adjoining southeast Bay of Bengal from forenoon and would gradually increase thereafter.
- **21st March:** Gale winds speed reaching 70-80 kmph gusting to 90 kmph are very likely to prevail over Andaman and Nicobar Islands, eastcentral Bay of Bengal and adjoining southeast Bay of Bengal.
- **22nd March:** Gale winds speed reaching 70-80 kmph gusting to 90 kmph are very likely to prevail over eastcentral Bay of Bengal, adjoining northeast Bay of Bengal and along & off southeast Bangladesh & North Myanmar coasts. Squally wind speed reaching 45-55 kmph gusting to 65 kmph is likely to prevail over north Andaman Islands, north Andaman Sea and adjoining southeast bay of Bengal.

(iii) Sea condition

- Sea condition is very likely to become rough over southeast Bay of Bengal and adjoining south Andaman Sea during 17th – 18th March.
- Sea condition is very likely to become rough to very rough over Andaman Sea and adjoining southeast Bay of Bengal during 19th March. It would become very rough over the same region on 20th March.
- Sea condition is very likely to become high over Andaman Sea, southeast and adjoining eastcentral Bay of Bengal on 21st, over eastcentral and adjoining southeast & northeast Bay of Bengal and north Andaman Sea on 22nd March.

(iv) Fishermen Warning (Graphics enclosed)

- Fishermen are advised not to venture into southeast BoB area areas during 17th – 21st March.
- Into Andaman Sea and along & off Andaman and Nicobar Islands during 18th to 22nd March.
- Into eastcentral Bay of Bengal during 21st to 22nd March and into northeast Bay of Bengal on 22nd March.

(v) EXPECTED IMPACT & ACTION SUGGESTED for Andaman and Nicobar Islands

A. Impact Expected

- Localized Flooding of roads, inundation and water logging in low lying areas.
- Occasional reduction in visibility due to heavy rainfall.
- Disruption of traffic due to water logging in roads leading to increased travel time.
- Adverse impact on marine and tourist activities along the coasts.
- Damage to kutcha roads.
- Possibilities of damage to vulnerable structure.
- Localized Landslides/Mudslides
- Damage to horticulture and standing crops in some areas due to squally wind and inundation.

B. Action Suggested

- Total suspension of fishing and tourism activities during 19th to 22nd March.
- Check for traffic congestion on your route before leaving for your destination.
- Follow any traffic advisories that are issued in this regard.
- Avoid going to areas that face the water logging problems often.
- Avoid staying in vulnerable structure.
- Regulate off-shore activities from 19th and suspension of off-shore activities during 20th to 22nd March.
- Regulate air-traffic on 20th and 21st March, 2022.

Next message will be issued at 1130 hours IST of tomorrow, the 18th March, 2022.

(Ananda Kumar Das)
Scientist-E, RSMC, New Delhi

Copy to: ACWC Kolkata/ ACWC Chennai/ CWC Bhubaneswarr/CWC Vishakhapatnam/MO Port Blair

LEGEND: Heavy Rainfall: 64.5 to 115.5mm, **Very Heavy Rainfall:** 115.6 to 204.4mm **Most Places:** more than 76% of total stations, **Isolated Places:** Less than 25% of total

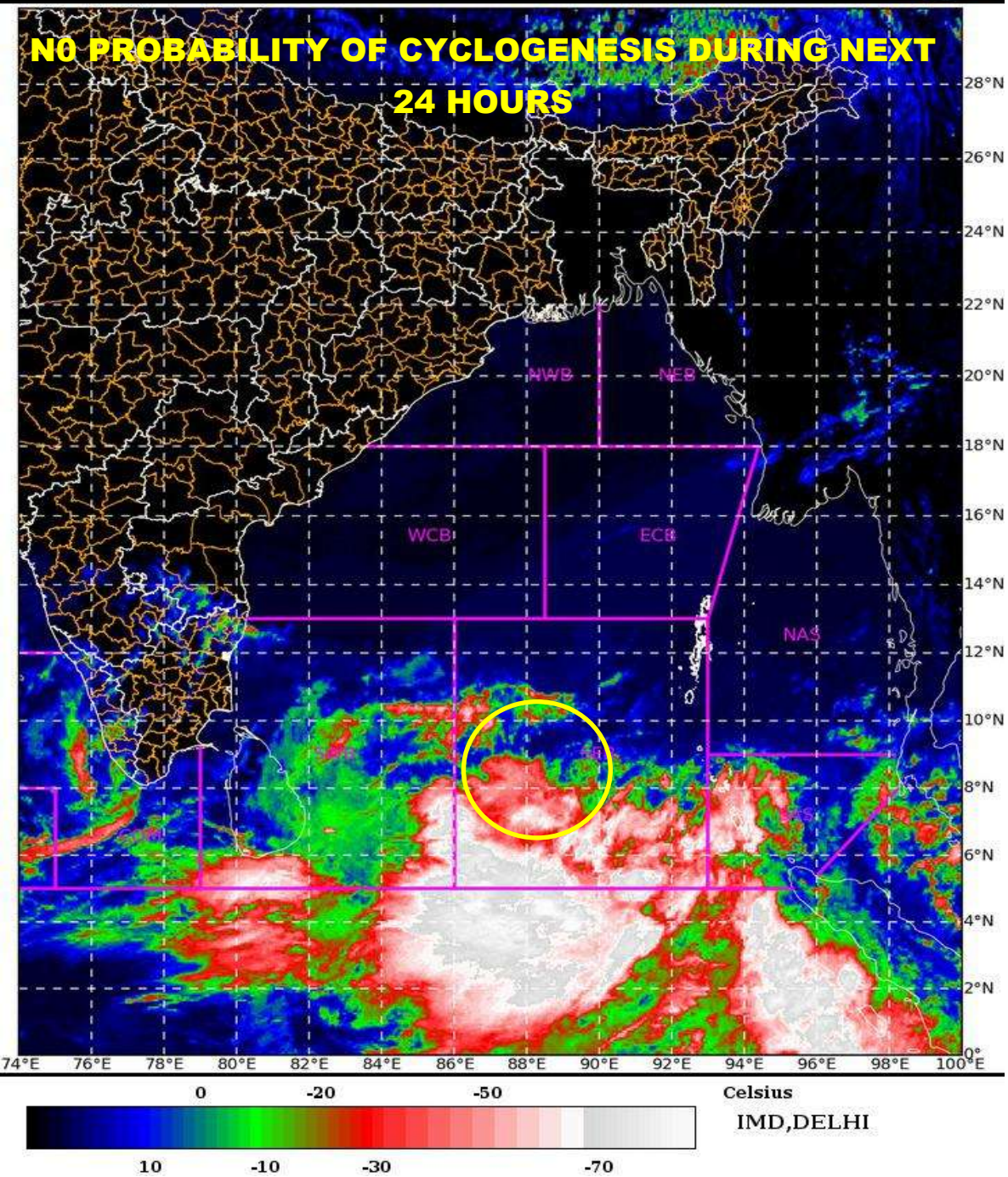
SAT : INSAT-3D IMG

17-03-2022/(0530 to 0556) GMT

IMG_TIR1_TEMP 10.8 um

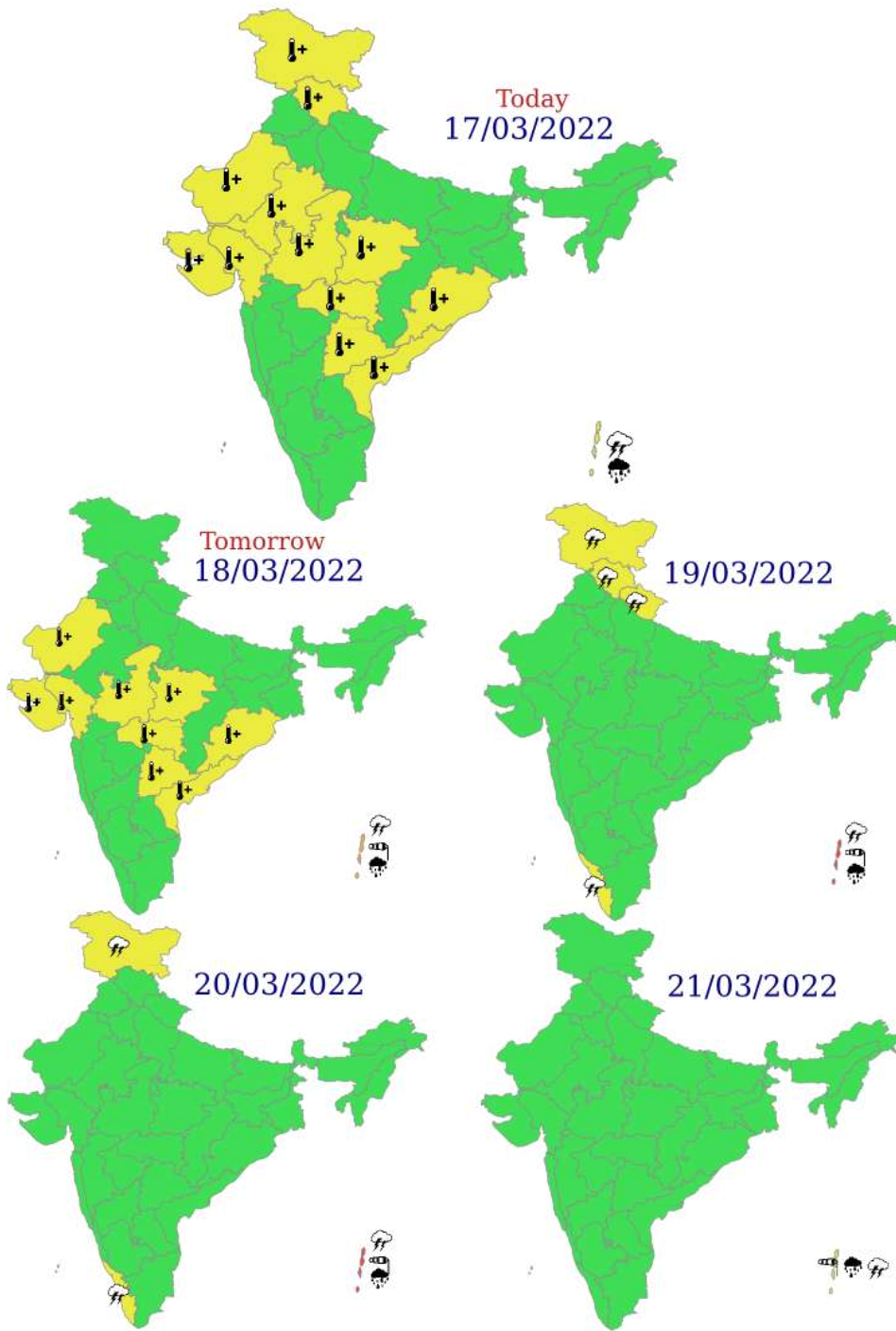
17-03-2022/(1100 to 1126) IST

L1C Mercator



LPA: LOW PRESSURE AREA

Rainfall Warning Graphics



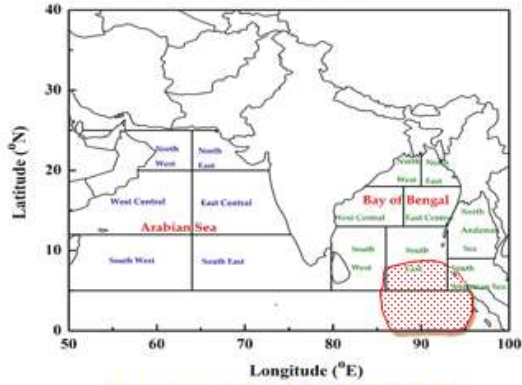
WARNING
WARNING (TAKE ACTION)
ALERT (BE PREPARED)
WATCH (BE UPDATED)
NO WARNING (NO ACTION)

 Heavy Rain
 Strong Winds

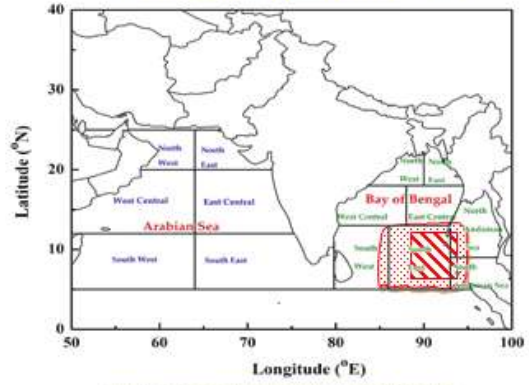
Fishermen warning Graphics

INDIA METEOROLOGICAL DEPARTMENT FISHERMAN WARNING FOR BAY OF BENGAL AND ARABIAN SEA

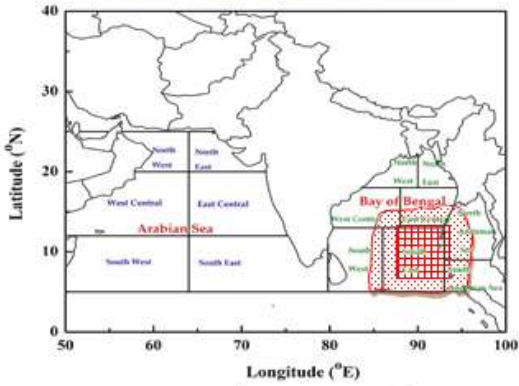
DAY-1: 17.03.2022/0600 UTC TO 18.03.2022/0600 UTC



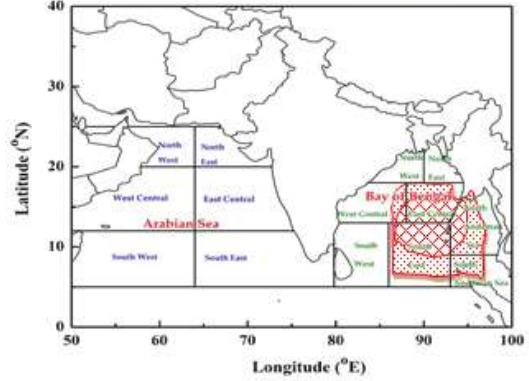
DAY-2: 18.03.2022/0600 UTC TO 19.03.2022 /0600 UTC



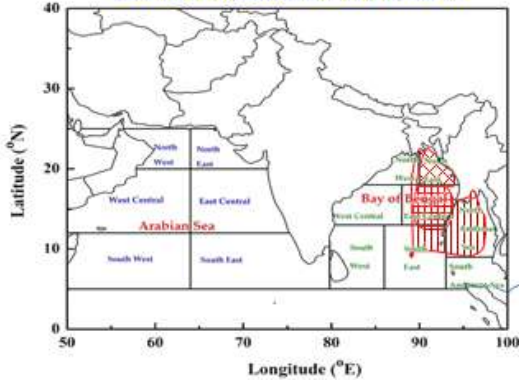
DAY-3: 19.03.2022/0600 UTC TO 20.03.2022/0600 UTC



DAY-4: 20.03.2022/0600 UTC TO 21.03.2022/0600 UTC



DAY-5: 21.03.2022/0600 UTC TO 22.03.2022/0600 UTC

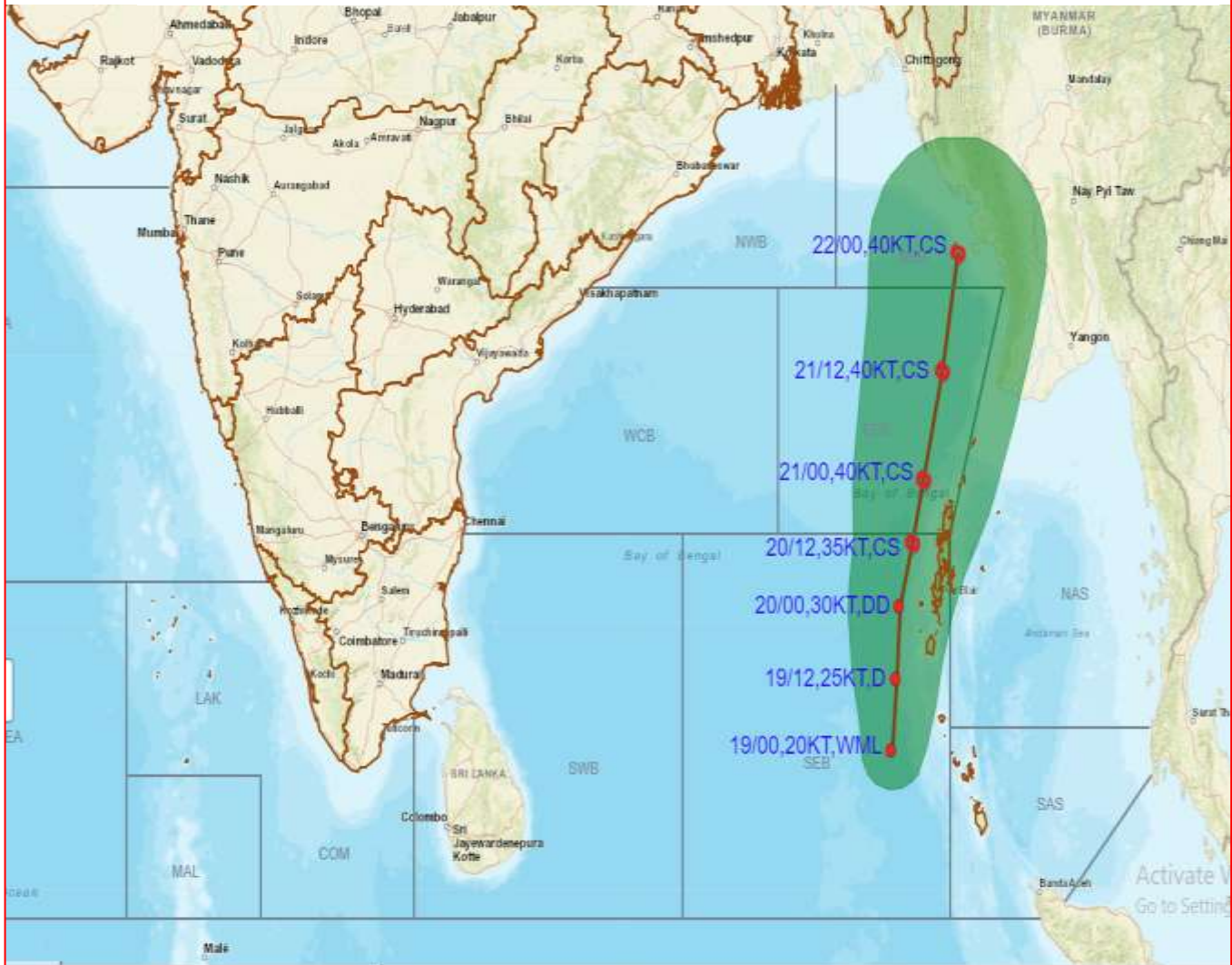


AREA UNDER FISHERMEN WARNING

-  40-50 KMPH GUSTING TO 55 KMPH (SQUALLY WEATHER)
-  45-55 KMPH GUSTING TO 65 KMPH
-  50-60 KMPH GUSTING TO 70 KMPH
-  60-70 KMPH GUSTING TO 80 KMPH
-  70-80 KMPH GUSTING TO 90 KMPH



EXPERIMENTAL PRE-GENESIS TRACK FORECAST ALONGWITH CONE OF UNCERTAINTY ISSUED AT THE STAGE OF LOW PRESSURE AREA OVER SOUTHEAST BAY OF BENGAL ON 0300 UTC OF 17TH MARCH 2022



DATE/TIME IN UTC

IST=UTC + 0530

L: LOW PRESSURE AREA

WML: WELL MARKED LOW PRESSURE AREA

D: DEPRESSION (17-27 KT)

DD: DEEP DEPRESSION (28-33 KT)

CS: CYCLONIC STORM (34-47 KT)

SCS: SEVERE CYCLONIC STORM (48-63KT)

VSCS: VERY SEVERE CYCLONIC STORM (64-89 KT)

ESCS: EXTREMELY SEVERE CYCLONIC STORM (90-119 KT)

SuCS: SUPER CYCLONIC STORM (≥ 20 KT)



LESS THAN 34 KT



34-47 KT



≥ 48 KT



OBSERVED TRACK



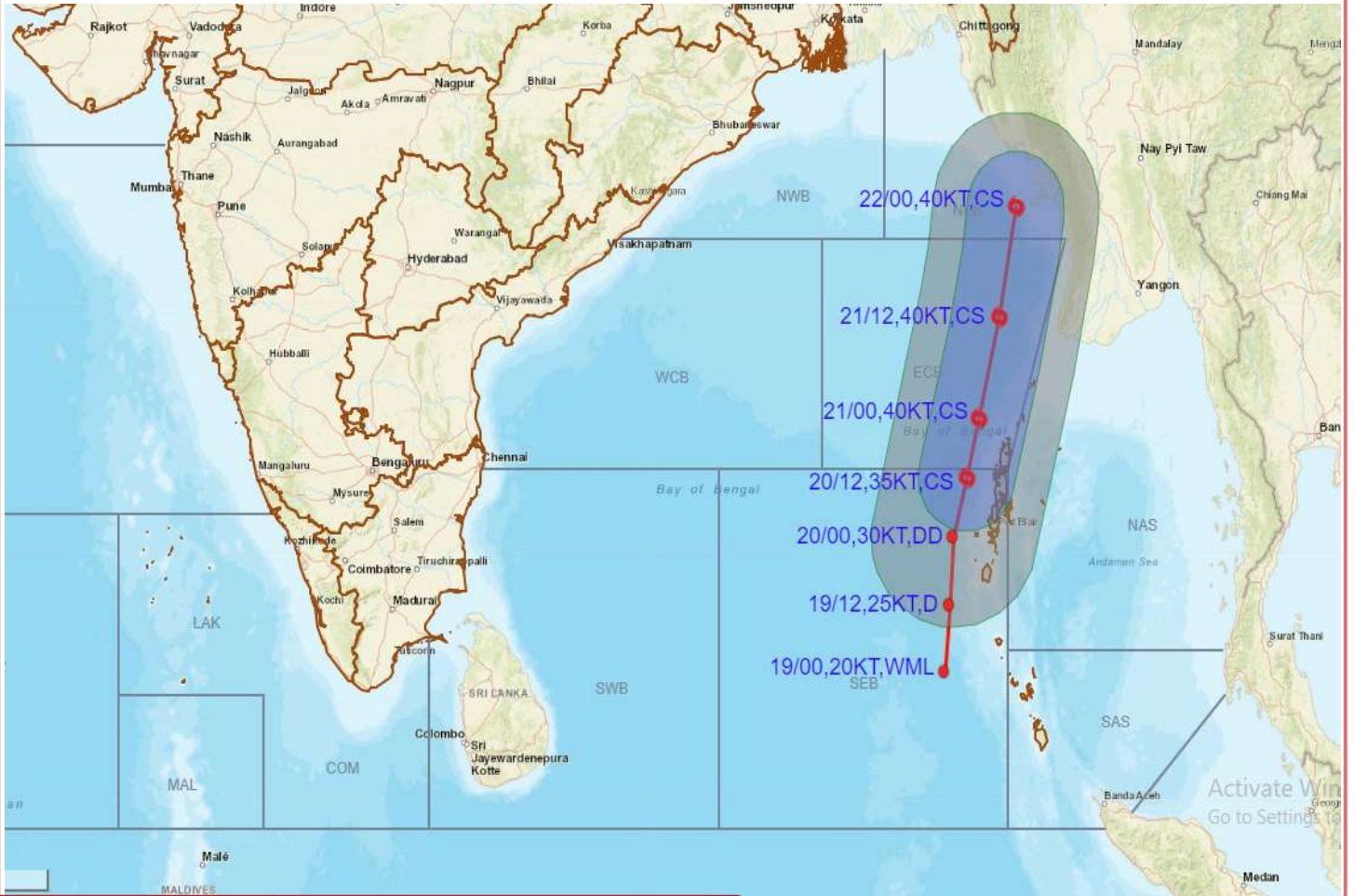
FORECAST TRACK



CONE OF UNCERTAINTY



EXPERIMENTAL PRE-GENESIS INTENSITY FORECAST ALONGWITH QUADRANT WIND DISTRIBUTION ISSUED AT THE STAGE OF LOW PRESSURE AREA OVER SOUTHEAST BAY OF BENGAL ON 0300 UTC OF 17TH MARCH 2022



DATE/TIME IN UTC
IST=UTC + 0530
L: LOW PRESSURE AREA
WML: WELL MARKED LOW PRESSURE AREA
D: DEPRESSION (17-27 KT)
DD: DEEP DEPRESSION (28-33 KT)
CS: CYCLONIC STORM (34-47 KT)
SCS: SEVERE CYCLONIC STORM (48-63KT)
VSCS: VERY SEVERE CYCLONIC STORM (64-89 KT)
ESCS: EXTREMELY SEVERE CYCLONIC STORM (90-119 KT)
SuCS: SUPER CYCLONIC STORM (≥ 120 KT)

- LESS THAN 34 KT
- 34-47 KT
- ⦿ ≥ 48 KT
- OBSERVED TRACK
- FORECAST TRACK
- ▲ CONE OF UNCERTAINTY
- AREA OF MAXIMUM SUSTAINED WIND SPEED:**
- 28-33 KT (52-61 KMPH)
- 34-49 KT (62-91 KMPH)
- 50-63 KT (92-117 KMPH)
- ≥ 64 KT (≥118 KMPH)

IMPACT OVER THE SEA

MSW (knot/kmph)	Impact	Action
28-33 (52-61)	Very rough seas	Total suspension of fishing operations
34-49 (62-91)	High to very high seas	Total suspension of fishing operations
50-63 (92-117)	Very high seas	Total suspension of fishing operations
≥ 64 (≥118)	Phenomenal	Total suspension of fishing operations